

Notices to Mariners, SWEDEN Swedish Maritime Administration



SWEDISH MARITIME
ADMINISTRATION

NtM-Editorial office
Swedish Maritime Administration
601 78 Norrköping

Sweden
Tel: 0771 630 605
E-mail: ufs@sjofartsverket.se

Publisher:
Hydrographer Patrik Wiberg

ANNOUNCEMENTS

*** 18441**

Chart: 74, 91

Sweden. not area bound. Chart 74 withdrawn.

See: [2024:1014/18411](#)

Swedish nautical chart 74 is withdrawn and will no longer be corrected. It is replaced by chart 91 which was released as a new chart in april 2024.

Chart Edition

74	7.0 NEW EDITION	Withdrawn
91	1.0 NEW CHART	

<https://ufs.sjofartsverket.se/en/Current/Products>

Sjöfartsverket. Publ. 31 Jul 2024

NOTICES

Areas without notices in this booklet

The Quark
Sea of Bothnia
Gulf of Finland
Gulf of Riga
Northern Baltic
Lake Mälaren and Södertälje Canal
South-Eastern Baltic
South-Western Baltic
The Sound
The Belts
Kattegat
Lake Vänern and Trollhätte Canal
Inshore waters
not area bound

Bay of Bothnia

*** 18553 (T)**

Chart: 4, 41, 415, 421

Sweden. Bay of Bothnia. E of Byske. Tåme. Firing exercises. August 20 - 22, 2024.

Firing exercises will be carried out at Tåme firing range during times listed below. During these times the charted danger area "R 58" is closed for navigation within stated distance from shore.

Further information on VHF channel 16, call Tåme skjutfält, or phone +46 921 348 405.

Date	Time	Range from shore
------	------	------------------

August 20 - 22	0800 - 1730 LT	9.5 M
----------------	----------------	-------

Position: Approx.	64-55N	021-30E	Tåme Firing practice area
-------------------	--------	---------	---------------------------

Not shown in ENC.

Bsp Bottenviken 2023/s37, s38, s39, s40, s41, s42, s44

Försvarmakten. Publ. 31 Jul 2024

*** 18587 (T)**

Chart: 4101

Sweden. Bay of Bothnia. Luleå. Sandön. Buoyage.

Time: Until further notice. Might be back spring 2025.

Buyoage temporarily removed

port-hand spar buoy	65-32,856N	022-13,600E
---------------------	------------	-------------

Bsp Bottenviken 2023/s26, s58

Sjöfartsverket. Publ. 31 Jul 2024

*** 18589 (T)****Chart: 4101, 414****Sweden. Bay of Bothnia. Luleå. Malmporten. ODAS-buoys installed.**

Three ODAS-buoys have been installed in the proximity of the fairway to collect data during the time of the dredging.

Insert	ODAS-buoy	65-33,883N	022-09,050E
	ODAS-buoy	65-24,783N	022-25,433E
	ODAS-buoy	65-32,883N	022-15,533E

Bsp Bottenviken 2023/s24, s26, s27, s57, s58

Sjöfartsverket. Publ. 31 Jul 2024

Sea of Åland and Archipelago Sea

* 18614 (T)

Chart: 536

Sweden. Sea of Åland and Archipelago Sea. Singö. Fogdö. Singsundet. Marine farm close to fairway. Obstruction.

Time: Until further notice

A marine farm is located in close vicinity of the fairway in 'Singsundet' between Singö and Fogdö.

Equipment is in direct proximity to the fairway and lacks aids to navigation and lights.

Mariners are requested to pass the area with caution.

Marine farm	60-08,94N	018-46,09E
-------------	-----------	------------

Bsp Stockholm N 2024/s19



Marine farm

Sjöfartsverket. Publ. 31 Jul 2024

Central Baltic

* 18506 (T)

Chart: 712, 713

Sweden. Central Baltic. Kalmar. Closed area. Kalmar triathlon 2024.

Triathlon competitions will take place at two separate times and two separate areas in the port of Kalmar. Vessels are during the below stipulated times not allowed to operate within the areas. Vessels in the vicinity are advised to pay attention to instructions given by the official boats.

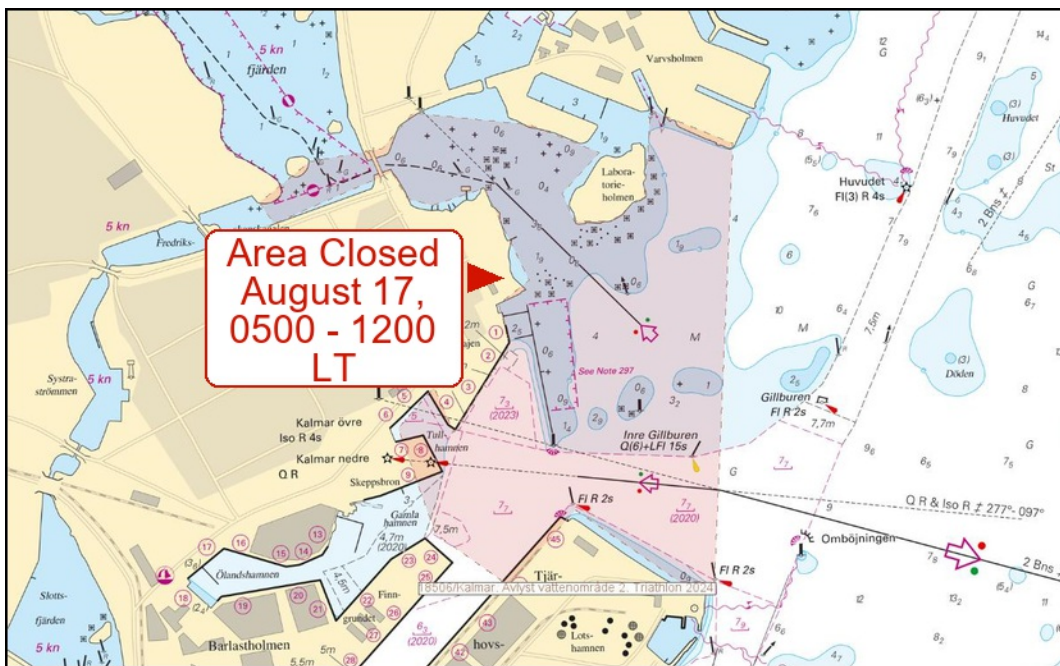
Time Area 1: August 14, 1530 - 2000 LT

Time Area 2: August 17, 0500 - 1200 LT

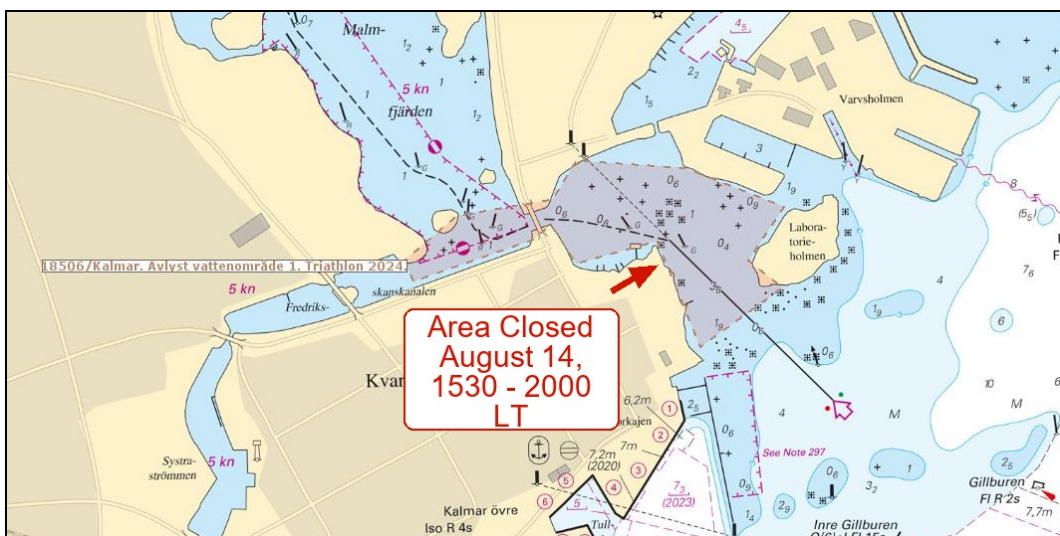
Area 1 (approximate center)	56-40,00N	016-22,30E
Area 2 (approximate center)	56-39,80N	016-22,60E

Not shown in ENC

Bsp Kalmarsund 2023/s35



Area 2



Area 1

Southern Baltic

* 18540 (T)

Chart: 7, 74, 742, 743, 8, 83

Sweden. Southern Baltic. S of Åhus. Ravlunda. Firing exercises. August 20 - 25, 2024.

Position: Approx.	55-46N	014-20E	Firing restriction area R34 RAVLUNDA
-------------------	--------	---------	--------------------------------------

Restricted area R34 will be closed for traffic during stated times.

During exercise yellow quick light, VQ Y, is shown from shore.

For further information call "Ravlunda skjutfält" on VHF Ch 16/68 or call +46 734-22 24 90.

Date	Hours	Range
August 20	0900 - 1700 LT	6.8 M
August 21	0900 - 1700 LT	6.8 M
August 22	0900 - 1900 LT	6.8 M
August 23	0900 - 1600 LT	6.8 M
August 24	0900 - 1600 LT	6.8 M
August 25	0900 - 1600 LT	6.8 M

Not shown in ENC.

Bsp Hanöbukten 2022/s06, s07, s24, s25, s26, s27, s28, s29, s30, s31, s32, s33, Bsp Sydkusten 2020/s06, s07, s29

Skagerrak

*** 18601 (T)**

Chart: 933

Sweden. Skagerrak. Orust. 'Koljöfjord'. Marine farm adrift.

Period: Until further notice

Parts of mussle plant as been see adrift in fjord 'Koljöfjorden'.

Mariners are adviced to navigate with caution.

Approximare position:	58-14,4N	011-35,0E
-----------------------	----------	-----------

Not shown in ENC

BSP Västkusten N 2023/s20

Länsstyrelsen i Västra Götaland. Publ. 31 Jul 2024

*** 18602 (T)**

Chart: 932

Sweden. Skagerrak. Orust. 'Stigfjorden'. Marine farm adrift.

Period: Until further notice

Parts of mussle plant as been see adrift in fjord 'Stigfjorden'.

Mariners are adviced to navigate with caution.

Approximate position:	58-04,6N	011-36,2E
-----------------------	----------	-----------

Not shown in ENC

BSP Västkusten N 2023/s05, s23, s24, Bsp Västkusten S 2023/s11, s12

Länsstyrelsen i Västra Götaland. Publ. 31 Jul 2024